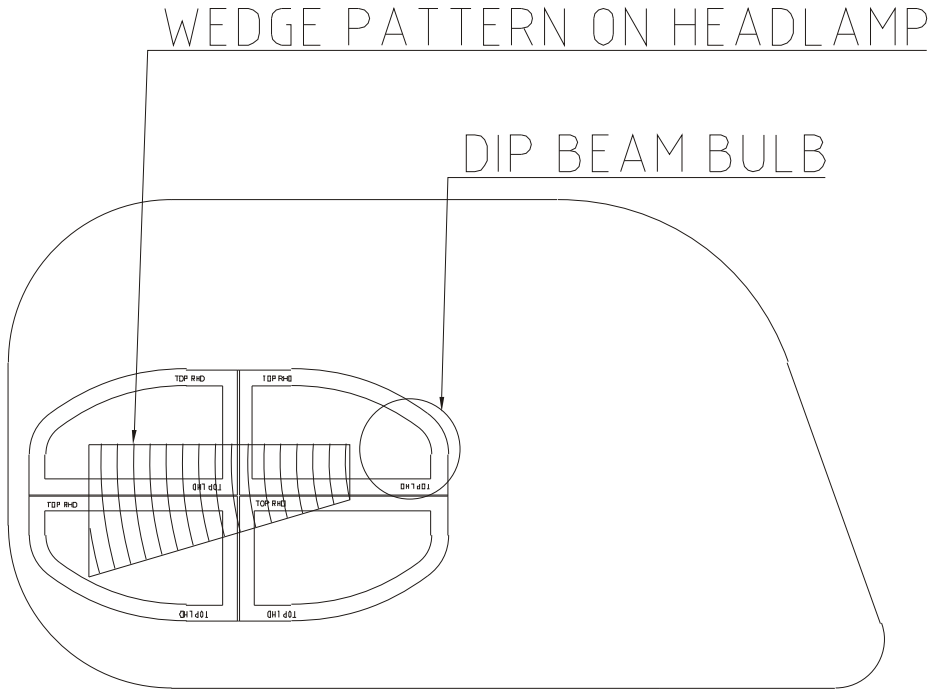
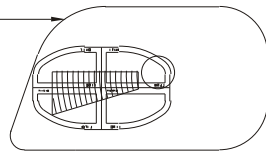


SUPER BEAM BENDER FIT GUIDE

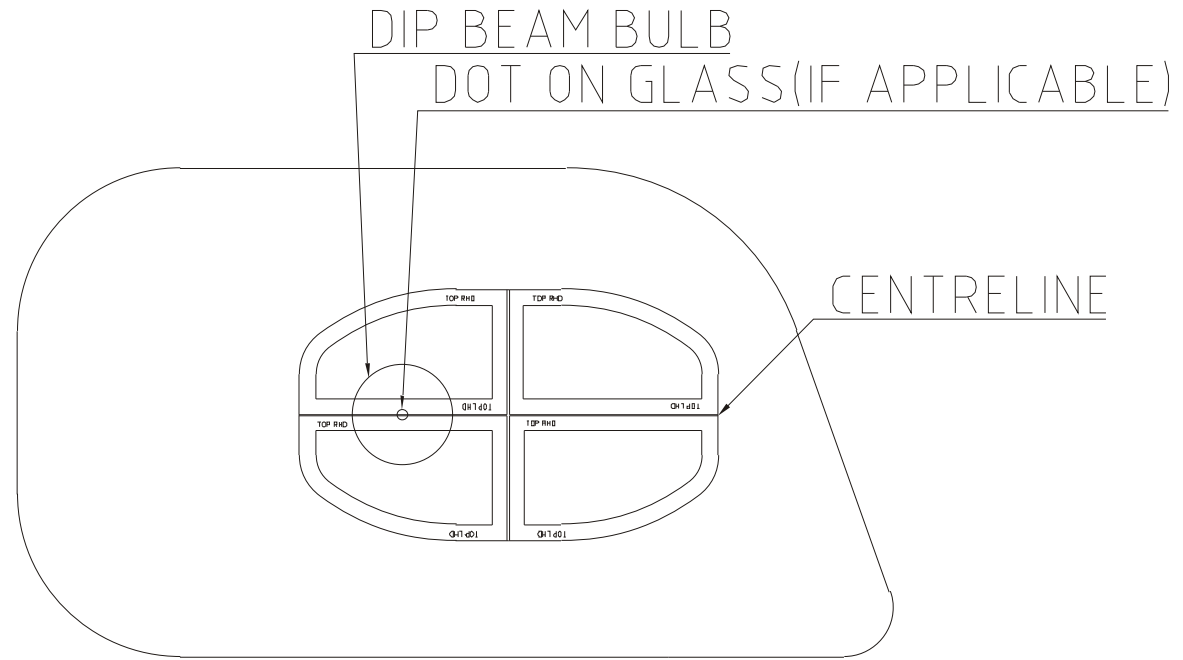
DRIVERS SIDE PATTERNED HEADLAMP LENS



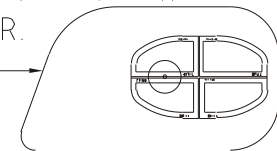
LOOKING AT THE FRONT OF THE CAR, POSITION SUPER BEAM BENDER OVER WEDGE PATTERN SITUATED TO LOWER LEFT OF DIP BEAM BULB. IF NO WEDGE PATTERN IS VISIBLE, POSITION SUPER BEAM BENDER TO LOWER LEFT OF DIP BEAM BULB. REPEAT FOR PASSENGER SIDE HEADLAMP



DRIVERS SIDE CLEAR HEADLAMP LENS



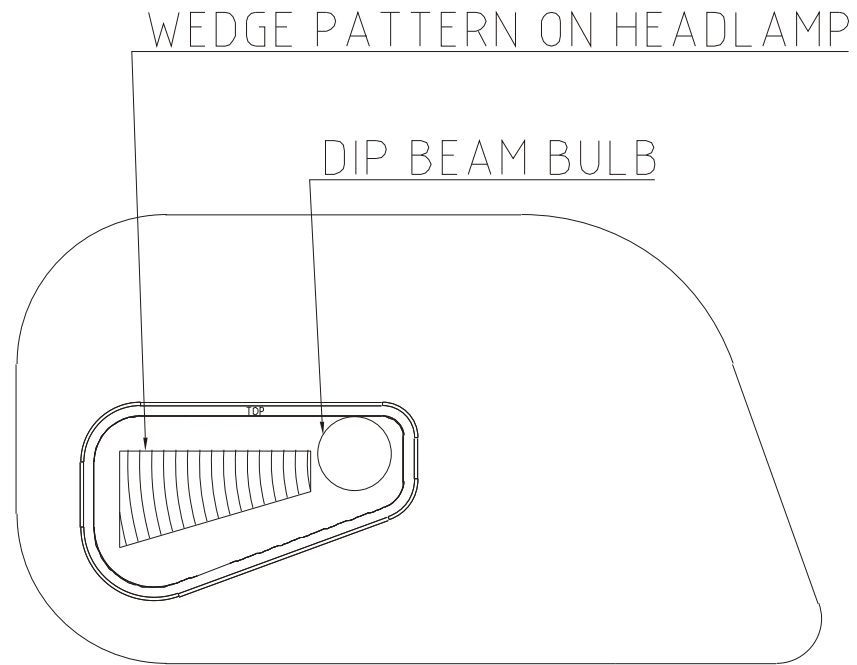
LOOKING AT THE FRONT OF THE CAR, POSITION DIP BEAM BULB (OR DOT ON GLASS) CENTRALLY WITHIN THE LEFT QUADRANTS OF THE SUPER BEAM BENDER, AND LEVEL WITH THE CENTRELINE OF THE SUPER BEAM BENDER. REPEAT FOR PASSENGER SIDE HEADLAMP



TO DETERMINE WHICH BULB IS THE DIP BEAM BULB, SWITCH THE VEHICLE IGNITION TO THE RUN POSITION. SWITCH THE HEADLAMPS FULLY ON AND ENSURE THAT THE MAIN BEAM (HIGH BEAM) WARNING LIGHT ON THE INSTRUMENT PANEL IS NOT LIT. IF IT IS LIT, SET THE HEADLAMP BEAMS TO DIP USING THE HEADLAMP DIP SWITCH.

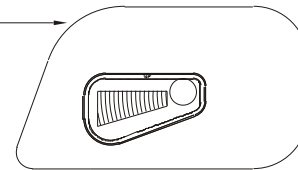
BEAM BENDER FIT GUIDE

FOR PATTERNED HEADLAMPS ONLY



DRIVERS SIDE HEADLAMP LENS

LOOKING AT THE FRONT OF THE CAR, POSITION BEAM BENDER OVER WEDGE PATTERN SITUATED TO LOWER LEFT OF DIP BEAM BULB. IF NO WEDGE PATTERN IS VISIBLE, POSITION BEAM BENDER TO LOWER LEFT OF DIP BEAM BULB. REPEAT FOR PASSENGER SIDE HEADLAMP



TO DETERMINE WHICH BULB IS THE DIP BEAM BULB, SWITCH THE VEHICLE IGNITION TO THE RUN POSITION. SWITCH THE HEADLAMPS FULLY ON AND ENSURE THAT THE MAIN BEAM (HIGH BEAM) WARNING LIGHT ON THE INSTRUMENT PANEL IS NOT LIT. IF IT IS LIT, SET THE HEADLAMP BEAMS TO DIP USING THE HEADLAMP DIP SWITCH.

Beam Bender Placement



Super Beam Bender Placement
Clear Lens



Super Beam Bender Placement
Patterned Lens

