



CTEK MXS 10

10 A



NEW
GENERATION
BATTERY CHARGERS

2
YEAR
WARRANTY

PROFESSIONAL CHARGING IN CONSUMER FORMAT

CTEK MXS 10

The MXS 10 is a charger that offers state of the art technology. It is ideal for professional use and excellent in workshops, caravans, RVs, boats or cars. The MXS 10 is perfect for solving a broad range of battery problems. It offers features such as battery diagnosis that shows if a battery can receive and retain a charge, a special reconditioning function that restores stratified and deeply discharged batteries, unique maintenance charging and a temperature sensor for optimised charging regardless of the weather conditions. It also has a power supply mode which allows the battery to be disconnected from the vehicle without losing important configurations. The unique display allows the user to follow the entire charging process.

The MXS 10 is a fully automatic 8-step charger that delivers 10 A to 12 V batteries from 20-200 Ah and is suitable for maintenance charging up to 300 Ah. The charger is IP65 classified (splash and dust proof), designed to protect vehicle electronics, non-sparking, reverse polarity protected, and short-circuit proof. It is delivered with a 2-year warranty.

TECHNICAL DATA

CHARGING VOLTAGE	14.4/14.7/15.8 /13.6 V
CHARGING CURRENT	Max 10 A
TYPE OF CHARGER	8 step, fully automatic charging cycle
TYPE OF BATTERY	12 V lead-acid batteries
BATTERY CAPACITY	20-200 Ah, up to 300 Ah for maintenance
INSULATION	IP65 (splash and dust proof)



Fully automatic for optimal charging



For all lead-acid batteries



FULLY CHARGED BATTERY



Maintenance charging



Temperature sensor

AGM

For charging in cold conditions and AGM batteries

RECOND

Recondition of deeply discharged batteries

SUPPLY

Use the charger as a power supply

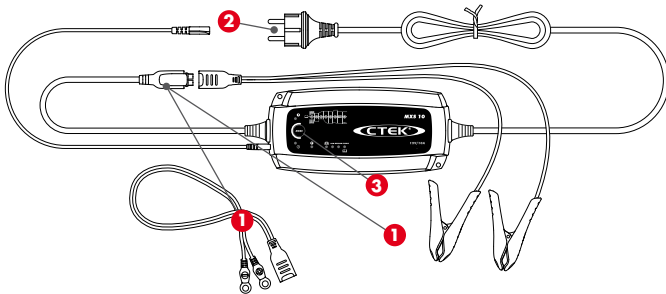


THE SMARTEST BATTERY CHARGERS IN THE WORLD



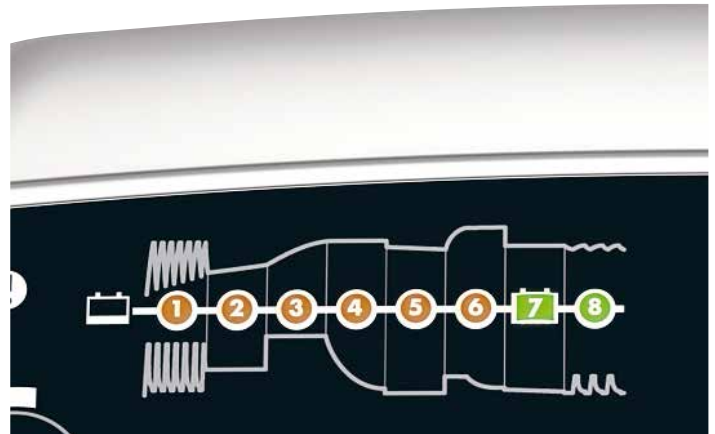
- Temperature compensated, fully automatic charging, and maintenance in 8 steps maximizes battery life and performance
- Numerous accessories simplify using the same charger for multiple batteries
- Water-resistant so that the solution could be taken to the problem even if it rains or snows
- Power Supply that simplifies battery replacement without losing vehicle memory
- Patented maintenance charge for a unique combination of maximized life and performance
- Recondition of deep discharged batteries
- Patented desulphation that extends the battery life
- No sparks, short-circuit proof and reverse-polarity protected for untroubled usage
- Automatic detection of end-of-life batteries that eliminates surprises

CONNECT AND FORGET



- 1. Connect the charger to the battery.**
- 2. Connect the charger to the wall socket.**
Power-on lamp lights
- 3. Press the MODE-button to select charging program.**
 - Normal and slightly bigger batteries
 - AGM** For charging in cold conditions and AGM batteries
 - RECOND** Reconditioning of deeply discharged batteries
 - SUPPLY** 12 V power supply or float maintenance
- 4. ... and ready.**

CTEK's UNIQUE 8 STEP CHARGING



- 1 STEP 1 DESULPHATION**
Pulsing voltage removes sulphates from the lead plates of the battery restoring the battery capacity.
- 2 STEP 2 SOFT START**
Tests if the battery can accept charge. Charging begins if the battery is OK.
- 3 STEP 3 BULK**
Charging with maximum current until approximately 80 % battery capacity.
- 4 STEP 4 ABSORPTION, READY TO USE**
Charging with declining current to maximize up to 100 % battery capacity.
- 5 STEP 5 ANALYSE**
Tests if the battery can hold charge. Batteries that cannot hold charge may need to be replaced.
- 6 STEP 6 RECOND**
Reconditioning function for deeply discharged batteries.
- 7 STEP 7 FLOAT, FULLY CHARGED**
Maintaining the battery voltage at maximum level by providing a constant voltage charge.
- 8 STEP 8 PULSE, MAINTENANCE CHARGING**
Maintaining the battery at 95-100 % capacity. The charger monitors the battery voltage and gives a pulse when necessary to keep the battery fully charged.

GUARANTEED QUALITY WITH CTEK

CTEK customer support is available to answer any questions related to charging and CTEK chargers. Safety, simplicity and flexibility characterizes all products and solutions developed and sold by CTEK. CTEK supply chargers to more than 60 countries throughout the world. CTEK is also a reliable OEM supplier to many of the world's most prestigious car and motorcycle manufacturers.

Contact customer support: info@ctek.com

Experts in Brand Distribution
Saxon

Everland Road, Hungerford, Berkshire, RG17 0DX, UK
Tel: 01488 689 400 | Fax: 01488 684317
info@saxon-brands.com | www.saxon-brands.com

